

Eloquent Eyes

BROW, LASH & BEAUTY SPECIALISTS

Lash Extension

STARTER PACK

Everything you need to
know!



0418 954 203



@ELOQUENTEYES



@ELOQUENTEYESPERTH

WWW.ELOQUENTEYES.COM.AU

EE



	Page
Introduction.....	1-2
Everyday 1/2 Set	3-4
Natural Express Volume/ Hybrid	5-6
Classics	7-8
Glam Express Volume/ Hybrid	9-10
Mega Volume	11-12
Add on.....	13
Styling- Curls	14
styling- Shape	15
Information & Policies	16-17
Aftercare & Voucher.....	18-19

Welcome to Eloquent Eyes!
We will start off your lash journey with a consultation to decide upon the best styling to suit you.

Our Lash Specialists have undertaken extensive educational training and are focussed on creating a design that you love and best suits your lifestyle, wants and needs. We will also educate you about wearing lash extensions.

We focus on protecting your natural lashes by ensuring that the extensions aren't too long or heavy.

Retention can be affected by many different factors such as:

- temperature and humidity
- too long or heavy
- application
- stress / illness
- change in skincare
- sleeping on them
- not following the after care instructions (P18)

Everyday 1/2 Set



Everyday 1/2 Set

3D- 4D volume lashes are spread across the lashline to create a mascara effect.

A great style for your first time or for an event.

This is the only set you are able to apply mascara to, as we remove them and start from scratch at the infill appointment.

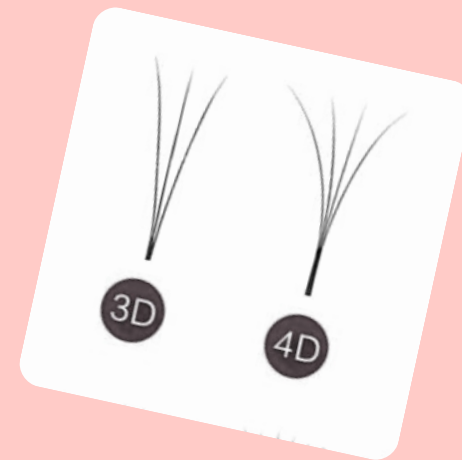
But if you would like refills, you can return in 2 weeks, book in for a natural express infill and not have worn mascara.

1/2 set: 1 hour \$99

Natural express infill 45mins: \$105

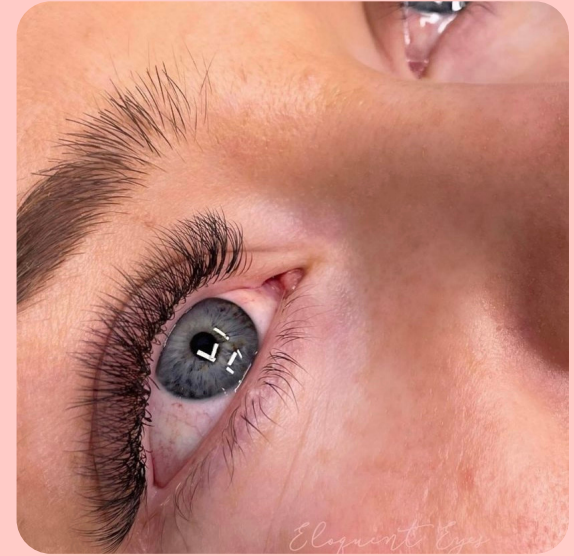
Natural express infill 1 hr: \$115

removal: \$37



EE

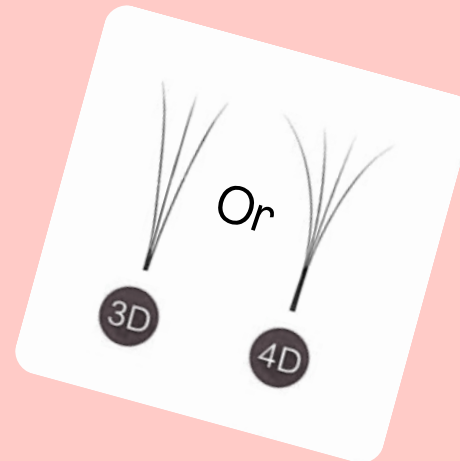
Natural Express (Volume or Hybrid)



EE

Natural Express (Volume or Hybrid)

A set of premade 3-4D volume fans fuller than the 1/2 set. If you would like hybrid we will add a mix of classics. This set is natural, is great for your first time and adds length and volume. Infills are needed every 2/3 weeks



Full set (1hr) - \$130

Infill (45mins) - \$105

Infill (1hr) - \$115

Classics



Classics

One single lash extension is applied to the natural lash. Classics are a popular natural set and give length over fullness.

Infills are needed every 2-3weeks



← One lash applied

Full set (90mins) - \$150
Touch up (30mins) - \$80
Light Infill (mins) - \$99
Heavy Infill (mins)- \$125

Glam Express (Volume or Hybrid)



Glam Express

(Volume or Hybrid)

Our most popular set. Premade 5-9D fans gives glamorous fullness and length in either volume or hybrid.

Infills are needed every 2-3 weeks



Full set 90mins \$170
Glam touch up 30mins \$85
Light infill 45mins \$105
Heavy infill 1 hr \$115

Mega Volume

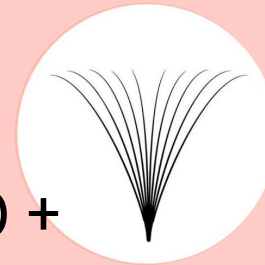


Mega Volume

Dramatic set of premade volume fans,
using 10D+. This set gives
you a thick, dramatic, bold, glamorous
and daring look. HOT!
Infills are needed every 2-3 weeks



10D +



Mega full set - 2.5- 3hrs - \$250
light Infill - 60mins - \$135
heavy infill - 75mins - \$195

Want them to be fuller?
Not a problem!

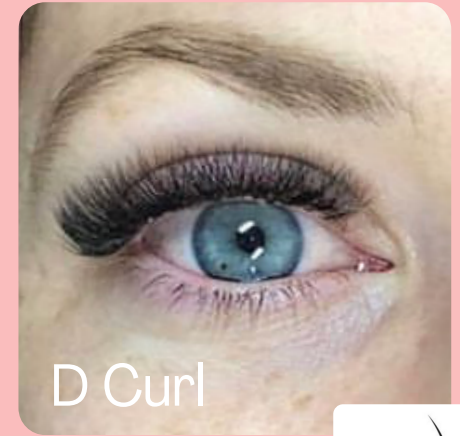
+30 mins
for only
\$30

Styling your Lashes (Which Curl?)



C Curl

C Curl is the most popular. Perfect for natural look and a good starting point.

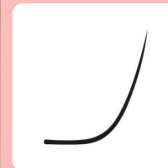


D Curl

D Curl is curlier than a C so its perfect for a dramatic look.



M Curl



M Curl is dramatic and gives the greatest definition. Ideal for cat/fox eye styling.

Styling your Lashes (Shape)

For a cat-eye style, longer lengths are placed on the outer edge of your eye. (or inner for a reverse cat eye). Makes the eyes look longer with an eyeliner effect. Very sexy!



The squirrel style is lovely and natural. The longest lashes are applied under the arch of the eyebrow.



The open eye is very popular as it makes your eyes look larger. The longest lengths are placed in the middle of the eye.



The wispy lash (Kim K), uses noticeably different lash lengths to create a strip lash effect.

EE

Information And Policies

- Infills are necessary every 2-3 weeks.
1/2 sets every 2 weeks.
Anything over is a full set
- Please note everyones retention is different, due to things like the products you use, lash health, lifestyle, sleep pattern.
- Lash styles can be changed very easily. We need to allocate the correct amount of time to your appointment. If you decide you want them fuller or more natural, please message us to adjust your treatment time.
- If you have lost more than 50% of lashes or no lashes left, please notify us prior as your appointment time will need to be adjusted.
- Old lashes that have grown but not fallen out are removed at every infill appointment. Your infill is a combination of maintenance and applying new lashes.



Information And Policies

- We welcome feedback, both positive and constructive. If you have a large amount of loss or aren't 100% happy, please let us know in the first 48 hours because we will rectify this for you free of charge. If it is over 48hrs we are unable to offer a free infill as it is due to aftercare and lifestyle.
- If you prefer a particular Lash Specialist, do not be afraid to tell us. We will not take offense and will endeavour to ensure you are always with your preferred Specialist wherever possible.
(although it is not guaranteed)
- If you are late to your appointment don't stress. We need to stick to our appointment schedule so we won't be able to add on any more time but we will do what we can in the remaining timeframe. The original appointment fee will remain the same.
- No shows or late cancellation will be charged in full.
Deposits may be taken in busy periods of service
(holidays) due to high demand.

Aftercare

No swimming, steam rooms, saunas or facials for 48 hours.

Use only water-based Eyelash Extension approved makeup removers, cleansers and makeup. Oil/cream/wax based products will shorten the life of your Eyelash Extensions. A foaming cleaner MUST be used on your lashes daily to help prevent eye infections and demodex mite infestations. Mites love feeding on dead skin cells and oil.

Regular cleansing will keep your lashes healthy, your lash extensions lasting longer and will help prevent a build-up of natural oils, dust and makeup.

Avoid exfoliants around the eye area. This includes chemical exfoliators like AHAs, Glycolic Acid & Salicylic based cleansers.

No mascara or strip lashes. They ruin lash extensions and you will need a removal and full set as we can not infill when these have occurred.

No eyelash curlers are to be used whilst wearing lash extensions.

Avoid rubbing, touching or picking your lash extensions. This can become addictive, so just don't even go there!

Use a tissue to blot dry lashes after washing your face and brush with your spoolie. Let your Lash Specialist know immediately if you experience any irritation or discomfort.

Don't forget to pre-book your eyelash refills at 2-3 week intervals in order to maintain the fullness of your Eyelash Extensions.



Lash cleanser \$29

We look forward to welcoming you into the salon where you can have a relaxing lash nap whilst we work our magic.

If you can refrain from drinking coffee before your appointment we would appreciate it. Lash extension application is a finate treatment and any jitters make application difficult.

Please go to the loo before you lie down.

We do request that you do not bring any children or others to your appointment as the salon is busy and has limited room.

\$25 voucher

We offer a free \$25 voucher for new clients to put towards either a full set of lash extensions or a brow design. We apply this in salon at checkout.

How To Book In

Please book in online via our website:
www.eloquenteyes.com.au

7/4 Alexander Road Padbury WA 6025
0418 954 203

A deposit is required and the \$25 voucher will be redeemed when paying at the counter upon checkout.

Whilst it is totally fine to change your appointment, we do require 48 hrs notice to change or cancel your appointment. If we don't receive this, a 50% non refundable booking fee will be incurred.

PATCH TEST: If you have not had extensions before, patch tests are necessary and shall be done 48 hrs prior to your lash appointment. At this 10 minute appointment, we ask you to complete the consultation forms and before we apply just a few lashes to the outer corners of each eye.

Patch testing is important, as there are different kind of glues used during application and we want to make sure that they don't cause allergic reactions in our clients. Book your patch test online or give us to call to schedule.

We look forward to welcoming you into the salon where you can have a relaxing lash nap whilst we work our magic.

If you can refrain from drinking coffee before your appointment we would appreciate it. Lash extension application is a finate treatment and any jitters make application difficult.

Please go to the loo before you lie down.

We do request that you do not bring any children or others to your appointment as the salon is busy and has limited room.

